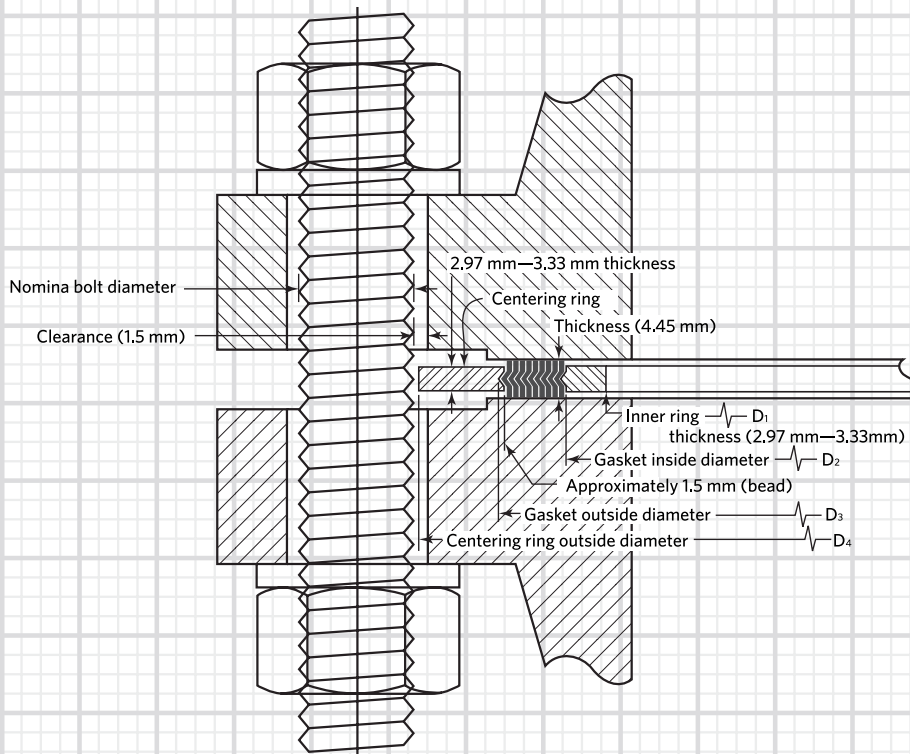




DIMENSIONS FOR SPIRAL-WOUND GASKETS ASME B16.20 USED WITH ASME B16.15 FLANGES



Allied Distributor



Flexitallic

Flexitallic®

- Spiral Sarımlı Conta (SWG - Spiral Wound Gasket)
- Metal Contalar (RJT - Ring Joint Type)
- FLEX
- Grafit
- Genleştirilmiş PTFE Teflon
- Metal Conta, Ceketli Conta
- Asbetsiz Conta
- Örgülü Salmastra
- Kammprofile
- İzolasyon Setleri, Flaş



Licensed Under
API Spec. 6A-0062

Flexitallic, yüksek kalitede statik sızdırmazlık elemanları üreten pazarın lider kuruluşlarından biridir. Spiral Sarımlı Conta 1912 yılı'nda Amerika'da Flexitallic tarafından keşfedilmiştir. Patent No: 5.161.807 ve 5.275.423

ASME B16.20, ASME B16.47, EN 1514 standart flaşlarına uygun olarak; Spiral Sarımlı Contalar(SWG - Spiral Wound Gasket), Metal Contalar(RJT - Ring Joint Type), Kammprofile Contalar üretilmektedir. Dolgu malzemesi olarak; Grafit, Teflon, Genleştirilmiş Teflon, Thermiculite® kullanılmaktadır.

Ayrıca Örgülü Salmastra ve Asbetsiz muhtelif contalık malzemelerde mevcuttur.

Flexitallic ürünleri sertifikalıdır ve bilgi formları mevcuttur. ABS, BAM, FDA, API(Fine Safe), Germanisher Lloyd, RoHS, RoTT, TA-LUFT, TÜV, WRAS gibi dökümanlara www.flexitallic.com web adresinden "data sheet" veya "Approvals" sekmelerinden ulaşabilirsiniz.

Allied Distributor



Tel. (+ 90) 212 222 5700 Fax (+ 90) 212 222 5699
info@o-pak.com.tr www.o-pak.com.tr



www.cetop.org

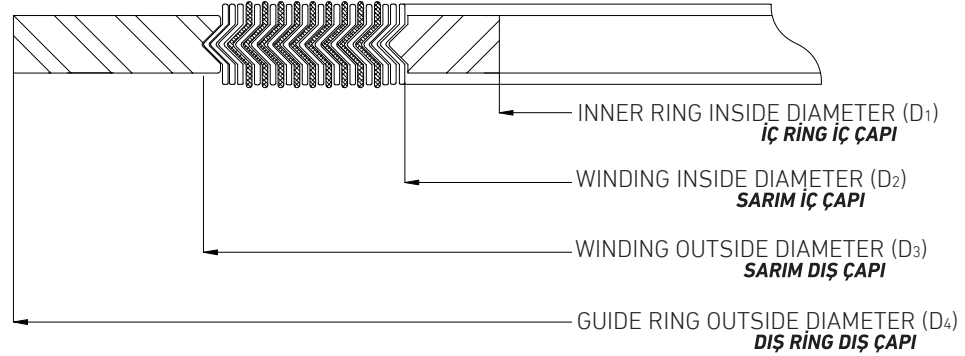


www.akder.org

Class 150



Dimensions for Style CG/CGI per ASME B16.20 to Suit ASME B16.5 Flanges



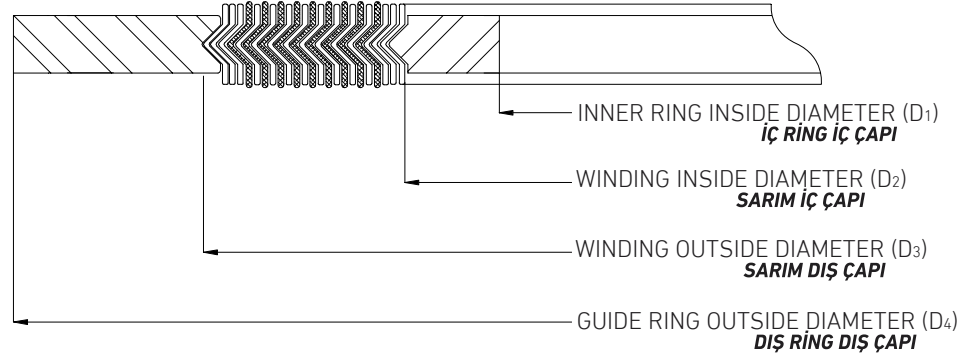
*Not Listed in ASME B16.20

Nominal Pipe Size (NPS)	Class 150							
	Inner Ring Inside Diameter (D ₁)		Winding Inside Diameter (D ₂)		Winding Outside Diameter (D ₃)		Guide Ring Outside Diameter (D ₄)	
	Inches	mm	Inches	mm	Inches	mm	Inches	mm
1/4*	-	-	0.50	12.7	0.88	22.2	1.75	44.5
1/2	0.56	14.2	0.75	19.1	1.25	31.8	1.88	47.6
3/4	0.81	20.6	1.00	25.4	1.56	39.7	2.25	57.2
1	1.06	26.9	1.25	31.8	1.88	47.6	2.63	66.7
1 1/4	1.50	38.1	1.88	47.6	2.38	60.3	3.00	76.2
1 1/2	1.75	44.5	2.13	54.0	2.75	69.9	3.38	85.7
2	2.19	55.6	2.75	69.9	3.38	85.7	4.13	104.8
2 1/2	2.62	66.5	3.25	82.6	3.88	98.4	4.88	123.8
3	3.19	81.0	4.00	101.6	4.75	120.7	5.38	136.5
3 1/2*	3.50	88.9	4.50	114.3	5.25	133.4	6.38	161.9
4	4.19	106.4	5.00	127.0	5.88	149.2	6.88	174.6
5	5.19	131.8	6.13	155.6	7.00	177.8	7.75	196.9
6	6.19	157.2	7.19	182.6	8.25	209.6	8.75	222.3
8	8.50	215.9	9.19	233.4	10.38	263.5	11.00	279.4
10	10.56	268.2	11.31	287.3	12.50	317.5	13.38	339.7
12	12.50	317.5	13.38	339.7	14.75	374.7	16.13	409.6
14	13.75	349.3	14.63	371.5	16.00	406.4	17.75	450.9
16	15.75	400.1	16.63	422.3	18.25	463.6	20.25	514.4
18	17.69	449.3	18.69	474.7	20.75	527.1	21.63	549.3
20	19.69	500.1	20.69	525.5	22.75	577.9	23.88	606.4
24	23.75	603.3	24.75	628.7	27.00	685.8	28.25	717.6

Class 300

Flexitallic[®]

Dimensions for Style CG/CGI per ASME B16.20 to Suit ASME B16.5 Flanges



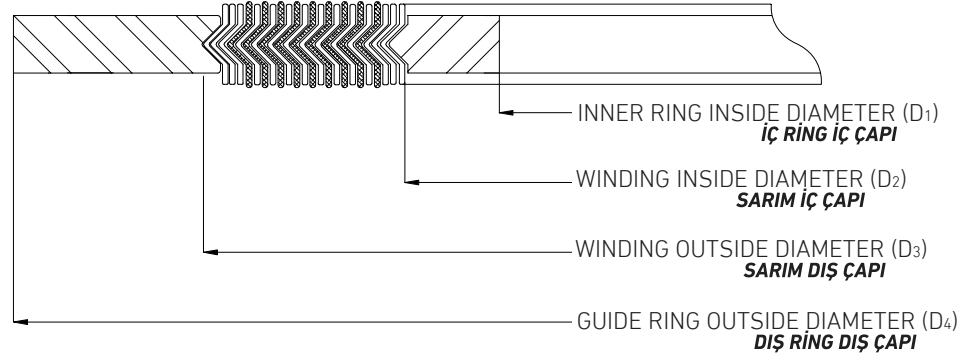
*Not Listed in ASME B16.20

Nominal Pipe Size (NPS)	Class 300							
	Inner Ring Inside Diameter (D ₁)		Winding Inside Diameter (D ₂)		Winding Outside Diameter (D ₃)		Guide Ring Outside Diameter (D ₄)	
	Inches	mm	Inches	mm	Inches	mm	Inches	mm
1/4*	-	-	0.50	12.7	0.88	22.2	1.75	44.5
1/2	0.56	14.2	0.75	19.1	1.25	31.8	2.13	54.0
3/4	0.81	20.6	1.00	25.4	1.56	39.7	2.63	66.7
1	1.06	26.9	1.25	31.8	1.88	47.6	2.88	73.0
1 1/4	1.50	38.1	1.88	47.6	2.38	60.3	3.25	82.6
1 1/2	1.75	44.5	2.13	54.0	2.75	69.9	3.75	95.3
2	2.19	55.6	2.75	69.9	3.38	85.7	4.38	111.1
2 1/2	2.62	66.5	3.25	82.6	3.88	98.4	5.13	130.2
3	3.19	81.0	4.00	101.6	4.75	120.7	5.88	149.2
3 1/2*	3.50	88.9	4.50	114.3	5.25	133.4	6.50	165.1
4	4.19	106.4	5.00	127.0	5.88	149.2	7.13	181.0
5	5.19	131.8	6.13	155.6	7.00	177.8	8.50	215.9
6	6.19	157.2	7.19	182.6	8.25	209.6	9.88	250.8
8	8.50	215.9	9.19	233.4	10.38	263.5	12.13	308.0
10	10.56	268.2	11.31	287.3	12.50	317.5	14.25	362.0
12	12.50	317.5	13.38	339.7	14.75	374.7	16.63	422.3
14	13.75	349.3	14.63	371.5	16.00	406.4	19.13	485.8
16	15.75	400.1	16.63	422.3	18.25	463.6	21.25	539.8
18	17.69	449.3	18.69	474.7	20.75	527.1	23.50	596.9
20	19.69	500.1	20.69	525.5	22.75	577.9	25.75	654.1
24	23.75	603.3	24.75	628.7	27.00	685.8	30.50	774.7

Class 400



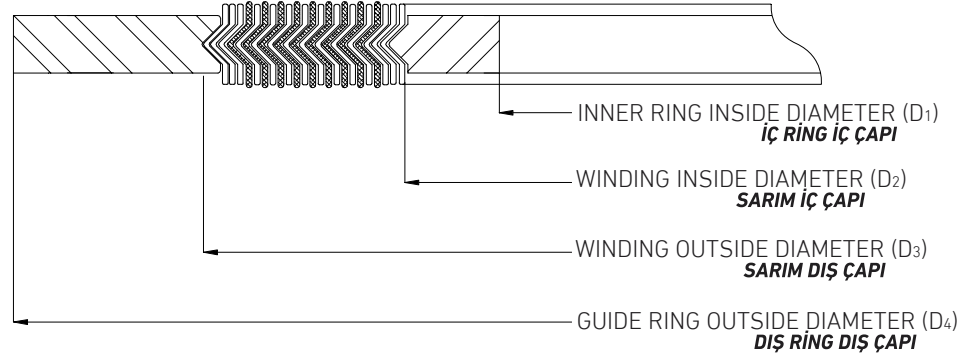
Dimensions for Style CG/CGI per ASME B16.20 to Suit ASME B16.5 Flanges



*Not Listed in ASME B16.20

Nominal Pipe Size (NPS)	Class 400							
	Inner Ring Inside Diameter (D ₁)		Winding Inside Diameter (D ₂)		Winding Outside Diameter (D ₃)		Guide Ring Outside Diameter (D ₄)	
	Inches	mm	Inches	mm	Inches	mm	Inches	mm
1/4*	-	-	0.50	12.7	0.88	22.2	1.75	44.5
1/2	0.56	14.2	0.75	19.1	1.25	31.8	2.13	54.0
3/4	0.81	20.6	1.00	25.4	1.56	39.7	2.63	66.7
1	1.06	26.9	1.25	31.8	1.88	47.6	2.88	73.0
1 1/4	1.50	38.1	1.88	47.6	2.38	60.3	3.25	82.6
1 1/2	1.75	44.5	2.13	54.0	2.75	69.9	3.75	95.3
2	2.19	55.6	2.75	69.9	3.38	85.7	4.38	111.1
2 1/2	2.62	66.5	3.25	82.6	3.88	98.4	5.13	130.2
3	3.19	81.0	4.00	101.6	4.75	120.7	5.88	149.2
3 1/2*	3.50	88.9	4.13	104.8	5.25	133.4	6.38	161.9
4	4.04	102.6	4.75	120.7	5.88	149.2	7.00	177.8
5	5.05	128.3	5.81	147.6	7.00	177.8	8.38	212.7
6	6.10	154.9	6.88	174.6	8.25	209.6	9.75	247.7
8	8.10	205.7	8.88	225.4	10.38	263.5	12.00	304.8
10	10.05	255.3	10.81	274.6	12.50	317.5	14.13	358.8
12	12.10	307.3	12.88	327.0	14.75	374.7	16.50	419.1
14	13.50	342.9	14.25	362.0	16.00	406.4	19.00	482.6
16	15.35	389.9	16.25	412.8	18.25	463.6	21.13	536.6
18	17.25	438.2	18.50	469.9	20.75	527.1	23.38	593.7
20	19.25	489.0	20.50	520.7	22.75	577.9	25.50	647.7
24	23.25	590.6	24.75	628.7	27.00	685.8	30.25	768.4

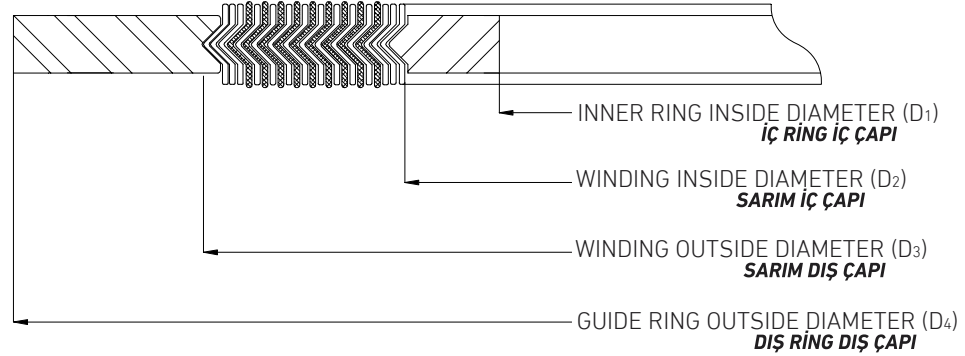
Dimensions for Style CG/CGI per ASME B16.20 to Suit ASME B16.5 Flanges



*Not Listed in ASME B16.20

Nominal Pipe Size (NPS)	Class 600							
	Inner Ring Inside Diameter (D ₁)		Winding Inside Diameter (D ₂)		Winding Outside Diameter (D ₃)		Guide Ring Outside Diameter (D ₄)	
	Inches	mm	Inches	mm	Inches	mm	Inches	mm
1/4*	-	-	0.50	12.7	0.88	22.2	1.75	44.5
1/2	0.56	14.2	0.75	19.1	1.25	31.8	2.13	54.0
3/4	0.81	20.6	1.00	25.4	1.56	39.7	2.63	66.7
1	1.06	26.9	1.25	31.8	1.88	47.6	2.88	73.0
1 1/4	1.50	38.1	1.88	47.6	2.38	60.3	3.25	82.6
1 1/2	1.75	44.5	2.13	54.0	2.75	69.9	3.75	95.3
2	2.19	55.6	2.75	69.9	3.38	85.7	4.38	111.1
2 1/2	2.62	66.5	3.25	82.6	3.88	98.4	5.13	130.2
3	3.19	81.0	4.00	101.6	4.75	120.7	5.88	149.2
3 1/2	3.50	88.9	4.13	104.8	5.25	133.4	6.38	161.9
4	4.04	102.6	4.75	120.7	5.88	149.2	7.63	193.7
5	5.05	128.3	5.81	147.6	7.00	177.8	9.50	241.3
6	6.10	154.9	6.88	174.6	8.25	209.6	10.50	266.7
8	8.10	205.7	8.88	225.4	10.38	263.5	12.63	320.7
10	10.05	255.3	10.81	274.6	12.50	317.5	15.75	400.1
12	12.10	307.3	12.88	327.0	14.75	374.7	18.00	457.2
14	13.50	342.9	14.25	362.0	16.00	406.4	19.38	492.1
16	15.35	389.9	16.25	412.8	18.25	463.6	22.25	565.2
18	17.25	438.2	18.50	469.9	20.75	527.1	24.13	612.8
20	19.25	489.0	20.50	520.7	22.75	577.9	26.88	682.6
24	23.25	590.6	24.75	628.7	27.00	685.8	31.13	790.6

Dimensions for Style CG/CGI per ASME B16.20 to Suit ASME B16.5 Flanges

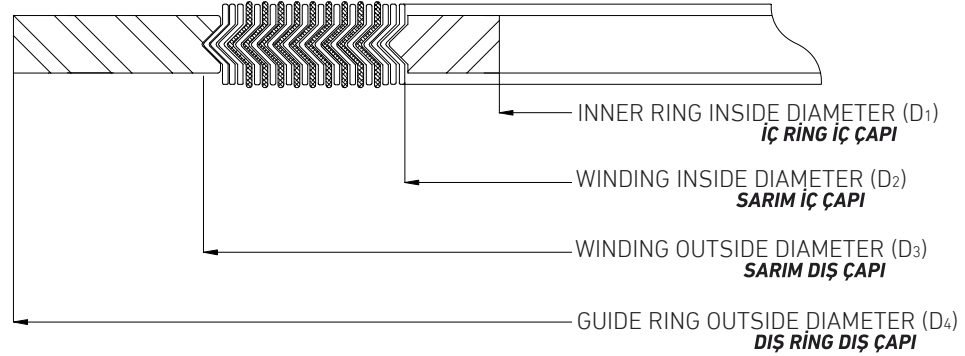


*Not Listed in ASME B16.20

**Inner rings are required

Nominal Pipe Size (NPS)	Class 900							
	Inner Ring Inside Diameter (D ₁)		Winding Inside Diameter (D ₂)		Winding Outside Diameter (D ₃)		Guide Ring Outside Diameter (D ₄)	
	Inches	mm	Inches	mm	Inches	mm	Inches	mm
1/4*	-	-	-	-	-	-	-	-
1/2	0.56	14.2	0.75	19.1	1.25	31.8	2.50	63.5
3/4	0.81	20.6	1.00	25.4	1.56	39.7	2.75	69.9
1	1.06	26.9	1.25	31.8	1.88	47.6	3.13	79.4
1 1/4	1.31	33.3	1.56	39.7	2.38	60.3	3.50	88.9
1 1/2	1.63	41.4	1.88	47.6	2.75	69.9	3.88	98.4
2	2.06	52.3	2.31	58.7	3.38	85.7	5.63	142.9
2 1/2	2.50	63.5	2.75	69.9	3.88	98.4	6.50	165.1
3	3.10	78.7	3.75	95.3	4.75	120.7	6.63	168.3
3 1/2*	3.50	88.9	4.13	104.8	5.25	133.4	7.50	190.5
4	4.04	102.6	4.75	120.7	5.88	149.2	8.13	206.4
5	5.05	128.3	5.81	147.6	7.00	177.8	9.75	247.7
6	6.10	154.9	6.88	174.6	8.25	209.6	11.38	288.9
8	7.75	196.9	8.75	222.3	10.13	257.2	14.13	358.8
10	9.69	246.1	10.88	276.2	12.25	311.2	17.13	435.0
12	11.50	292.1	12.75	323.9	14.50	368.3	19.63	498.5
14	12.63	320.8	14.00	355.6	15.75	400.1	20.50	520.7
16	14.75	374.7	16.25	412.8	18.00	457.2	22.63	574.7
18	16.75	425.5	18.25	463.6	20.50	520.7	25.13	638.2
20	19.00	482.6	20.50	520.7	22.50	571.5	27.50	698.5
24	23.25**	590.6	24.75	628.7	26.75	679.5	33.00	838.2

Dimensions for Style CG/CGI per ASME B16.20 to Suit ASME B16.5 Flanges

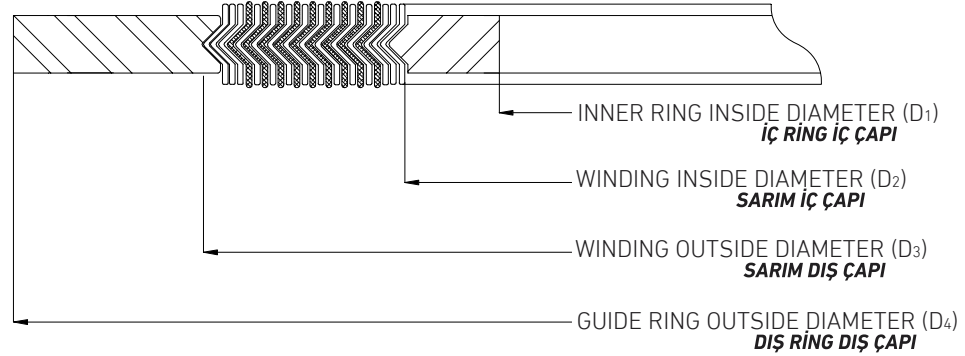


*Not Listed in ASME B16.20

**Inner rings are required

Nominal Pipe Size (NPS)	Class 1500							
	Inner Ring Inside Diameter (D ₁)		Winding Inside Diameter (D ₂)		Winding Outside Diameter (D ₃)		Guide Ring Outside Diameter (D ₄)	
	Inches	mm	Inches	mm	Inches	mm	Inches	mm
1/4*	-	-	-	-	-	-	-	-
1/2	0.56	14.2	0.75	19.1	1.25	31.8	2.50	63.5
3/4	0.81	20.6	1.00	25.4	1.56	39.7	2.75	69.9
1	1.06	26.9	1.25	31.8	1.88	47.6	3.13	79.4
1 1/4	1.31	33.3	1.56	39.7	2.38	60.3	3.50	88.9
1 1/2	1.63	41.4	1.88	47.6	2.75	69.9	3.88	98.4
2	2.06	52.3	2.31	58.7	3.38	85.7	5.63	142.9
2 1/2	2.50	63.5	2.75	69.9	3.88	98.4	6.50	165.1
3	3.10	78.7	3.63	92.1	4.75	120.7	6.88	174.6
3 1/2*	3.50	88.9	4.13	104.8	5.25	133.4	7.38	187.3
4	3.85	97.8	4.63	117.5	5.88	149.2	8.25	209.6
5	4.90	124.5	5.63	142.9	7.00	177.8	10.00	254.0
6	5.80	147.3	6.75	171.5	8.25	209.6	11.13	282.6
8	7.75	196.9	8.50	215.9	10.13	257.2	13.88	352.4
10	9.69	246.1	10.50	266.7	12.25	311.2	17.13	435.0
12	11.50**	292.1**	12.75	323.9	14.50	368.3	20.50	520.7
14	12.63**	320.8**	14.25	362.0	15.75	400.1	22.75	577.9
16	14.50**	368.3**	16.00	406.4	18.00	457.2	25.25	641.4
18	16.75**	425.5**	18.25	463.6	20.50	520.7	27.75	704.9
20	18.75**	476.3**	20.25	514.4	22.50	571.5	29.75	755.7
24	22.75**	577.9**	24.25	616.0	26.75	679.5	35.50	901.7

Dimensions for Style CG/CGI per ASME B16.20 to Suit ASME B16.5 Flanges

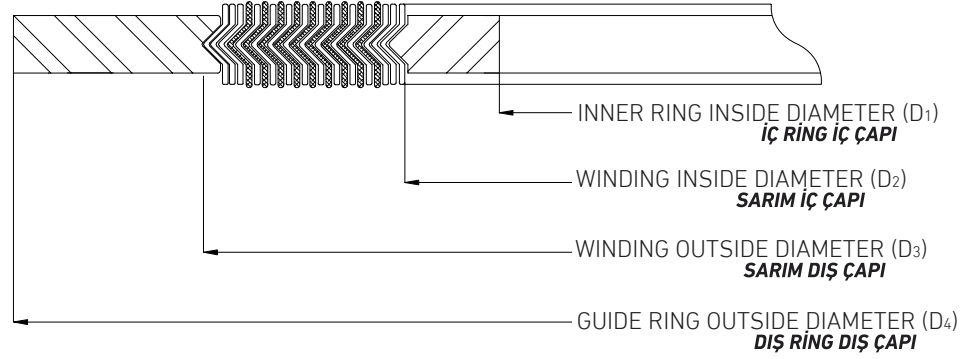


*Not Listed in ASME B16.20

**Inner rings are required

Nominal Pipe Size (NPS)	Class 2500							
	Inner Ring Inside Diameter (D ₁)		Winding Inside Diameter (D ₂)		Winding Outside Diameter (D ₃)		Guide Ring Outside Diameter (D ₄)	
	Inches	mm	Inches	mm	Inches	mm	Inches	mm
1/4*	-	-	-	-	-	-	-	-
1/2	0.56	14.2	0.75	19.1	1.25	31.8	2.75	69.9
3/4	0.81	20.6	1.00	25.4	1.56	39.7	3.00	76.2
1	1.06	26.9	1.25	31.8	1.88	47.6	3.38	85.7
1 1/4	1.31	33.3	1.56	39.7	2.38	60.3	4.13	104.8
1 1/2	1.63	41.4	1.88	47.6	2.75	69.9	4.63	117.5
2	2.06	52.3	2.31	58.7	3.38	85.7	5.75	146.1
2 1/2	2.50	63.5	2.75	69.9	3.88	98.4	6.63	168.3
3	3.10	78.7	3.63	92.1	4.75	120.7	7.75	196.9
3 1/2*	3.50	88.9	-	-	-	-	-	-
4	3.85**	97.8**	4.63	117.5	5.88	149.2	9.25	235.0
5	4.90**	124.5**	5.63	142.9	7.00	177.8	11.00	279.4
6	5.80**	147.3**	6.75	171.5	8.25	209.6	12.50	317.5
8	7.75**	196.9**	8.50	215.9	10.13	257.2	15.25	387.4
10	9.69**	246.1**	10.63	269.9	12.25	311.2	18.75	476.3
12	11.50**	292.1**	12.50	317.5	14.50	368.3	21.63	549.3

**Dimensions for Style CG/CGI to Suit Type A and B
Flange Facings per EN 1514-2 (Millimeters)**



DN	Inner Ring Inside Diameter (D ₁)	Winding Inside Diameter (D ₂)	Winding Outside Diameter (D ₃)	Winding Outside Diameter (D ₃)	Guide Ring Outside Diameter (D ₄)					
					PN10, PN25, PN40	PN63, PN100, PN160	PN10	PN25	PN40	PN63
mm	mm	mm	mm	mm	mm					
10	18	24	34	34	46			56		
15	23	29	39	39	51			61		
20	28	34	46	-	61			-		
25	35	41	53	53	71			82		
32	43	49	61	-	82			-		
40	50	56	68	68	92			103		
50	61	70	86	86	107			113	119	
65	77	86	102	106	127			137	143	
80	90	99	115	119	142			148	154	
100	115	127	143	147	162	168		174	180	
125	140	152	172	176	192	194		210	217	
150	167	179	199	203	217	224		247	257	
200	216	228	248	252	272	284	290	309	324	
250	267	279	303	307	327	340	352	364	391	388
300	318	330	354	358	377	400	417	424	458	458
350	360	376	400	404	437	457	474	486	512	-
400	410	422	450	456	488	514	546	543	572	-
500	510	522	550	556	593	624	628	657	704	-
600	610	622	650	656	695	731	747	764	813	-
700	710	722	756	762	810	833	852	879	950	-
800	810	830	864	870	917	942	974	988	-	-
900	910	930	964	970	1017	1042	1084	1108	-	-
1000	1010	1030	1074	1080	1124	1154	1194	-	-	-